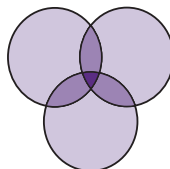


OFFERING HOPE



2014 - 2015 ANNUAL REPORT



TRI-COUNTY
MENTAL HEALTH
SERVICES, INC.



TOM PETRIZZO, CEO

REPORT FROM THE CEO

Tri-County prides itself on being the behavioral health safety net provider for the Northland. We are blessed with an active, engaged community, and every year we strive to serve that community as best we can. Last year, we served 7,953 individuals in Platte, Clay and Ray counties. While that

is an impressive number, what's more impressive are the individual stories of recovery, healing and health that exemplify the vital work we do. There are countless stories of people who were once confused and homeless and are now living independently in their own home or apartments, and stories of those riddled by drug use and trauma who are now sober and healthy. Tri-County team members are here to serve and to create those enduring stories of hope and healing. I am so proud of what we do, and every day I look forward to helping create more "success stories" for the Northland. Thank you.



TRI-COUNTY MENTAL HEALTH SERVICES BOARD OF DIRECTORS

CHAIR	Kevin Trimble	Dr. Mike Crim	Chelly Pfeifer
VICE CHAIR	Jeanne Pyland	Doug Ervin	Leisa Reid
SECRETARY	Sara Seidel	Gene Hanson	Rosemary Salerno
TREASURER	Brian Rice	Christal Milligan	Jo Stueve
	Toni Clemens	Mike O'Neal	Deanne Townsend



OUR HISTORY

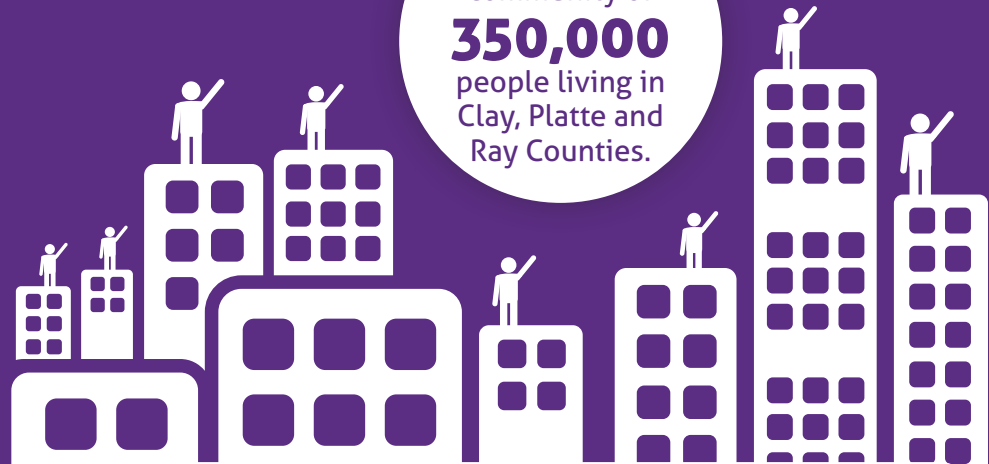
Twenty-five years ago a national paradigm shift was occurring, from hospital-sponsored care to community-based behavioral healthcare.

1990

Tri-County met this need and opened its doors in 1990 becoming the primary provider of comprehensive behavioral health services to the community.

2015

Tri-County now serves a community of **350,000** people living in Clay, Platte and Ray Counties.



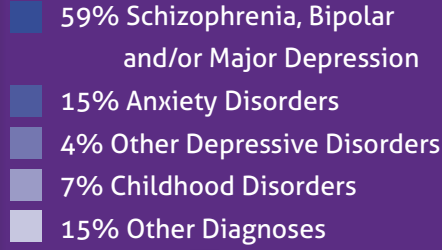
IN FISCAL YEAR 2015, TRI-COUNTY MENTAL HEALTH SERVED 7,953 INDIVIDUALS.

WHO WE SERVE

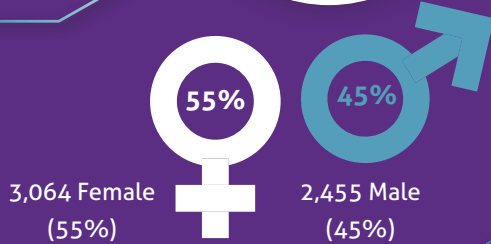
ACTIVE CONSUMERS BY RACE



PRIMARY DIAGNOSIS

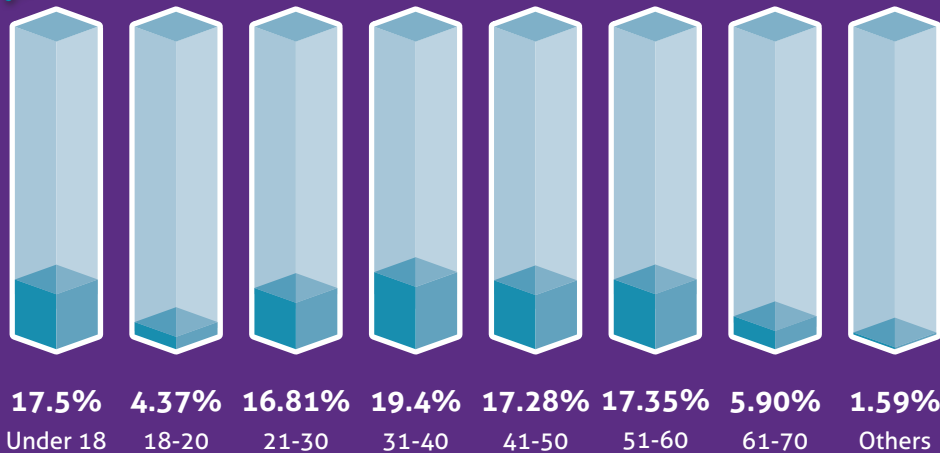


CONSUMERS SERVED FY 2015



ACTIVE CONSUMERS BY GENDER

ACTIVE CONSUMERS BY AGE



HOW WE SERVE

FEATURED PROGRAMS



HEALTHCARE HOME

The Healthcare Home program is a holistic and integrated care model utilizing a team of Nurse Care Managers to assure coordinated health services are received through appropriate promotion of healthy lifestyles. We have approximately **588 PERSONS** enrolled who receive assistance under this program.



EMPLOYMENT SERVICES

People with disabilities experience the highest unemployment rates in the nation. A cooperative effort involving Tri-County and Northland businesses matches employers with consumers wanting to work. In FY 2015, **290 PERSONS** received employment assistance; **107** were placed and **92** are still working.



COMMUNITY MENTAL HEALTH LIAISON

Designed to form a stronger alliance between law enforcement agencies, the courts, and crisis systems to improve access to services for high-risk individuals. Since 2014, this program has made **1,100 CONTACTS** with law enforcement and the courts, and approximately **730 REFERRALS** have been made.



HOSPITAL DIVERSION

This enhancement project assists consumers who are high utilizers of emergency rooms and inpatient psychiatric facilities by connecting them with outpatient providers who develop a sustainable treatment plan and prevent returns to the hospital. At any given time, approximately 25 consumers are active in this program.

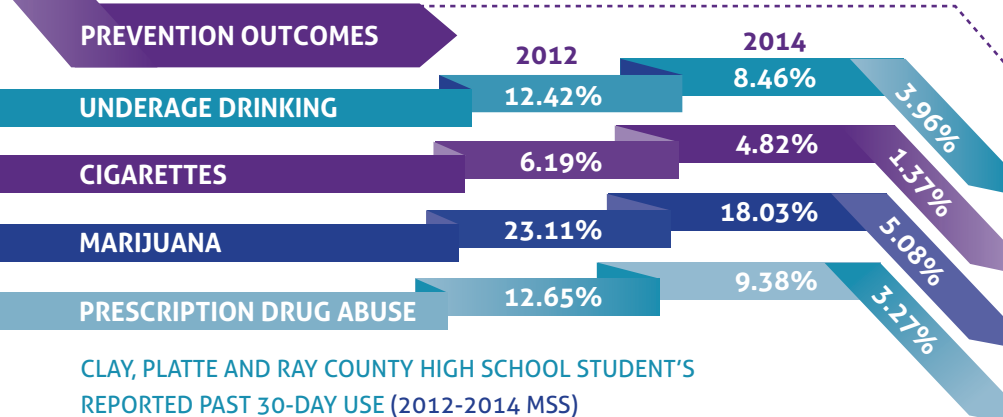
PREVENTION SERVICES

The Tri-County Prevention Program takes a wide-range approach to prevent substance abuse and violence among Northland youth. Working together with schools and coalitions, we use programs, policy, messaging and education to create safer and healthier environments for our youth.



532
Community Education
and Prevention
Advocacy Activities

27,613
Face-to-Face
Contacts



CLAY, PLATTE AND RAY COUNTY HIGH SCHOOL STUDENT'S REPORTED PAST 30-DAY USE (2012-2014 MSS)

REVENUE

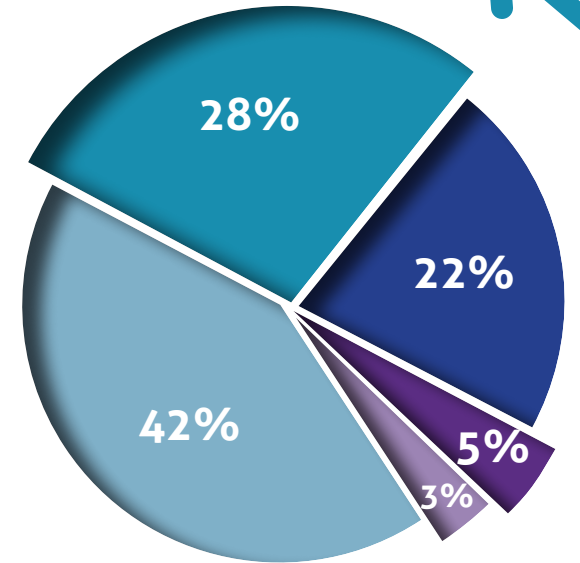
42%
MEDICAID, MEDICARE
AND MC+

28%
DEPARTMENT OF
MENTAL HEALTH

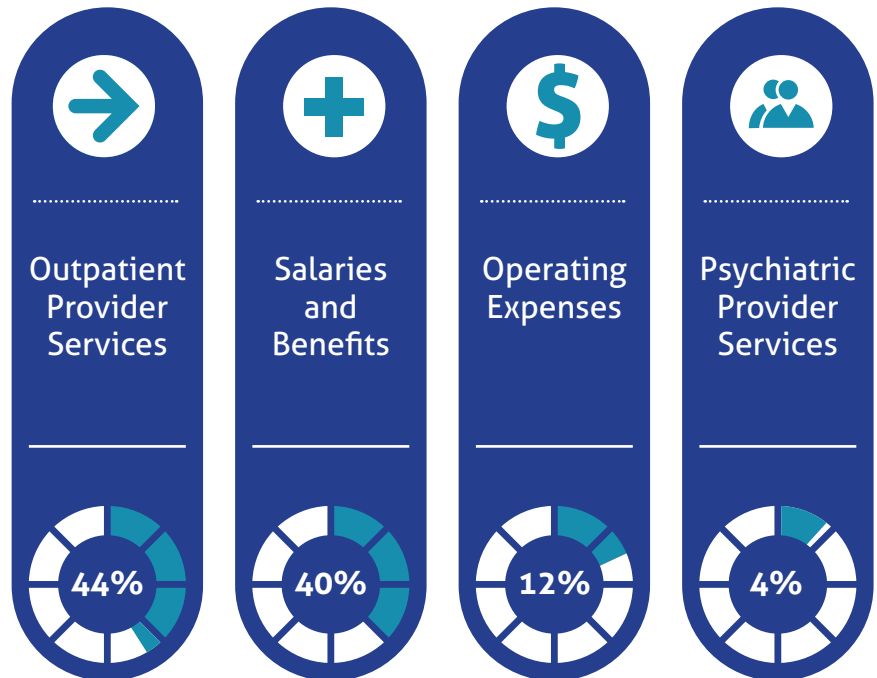
22%
COUNTY LEVY

5%
OTHER SOURCES

3%
GRANTS AND DONATIONS



EXPENSES



OFFERING HOPE TO THE NORTHLAND

Tri-County Mental Health is here to serve
you and your family.



Tri-County
Mental Health



3100 NE 83rd Street, Suite 1001
Kansas City, MO 64119
(816) 468-0400
www.tri-countymhs.org